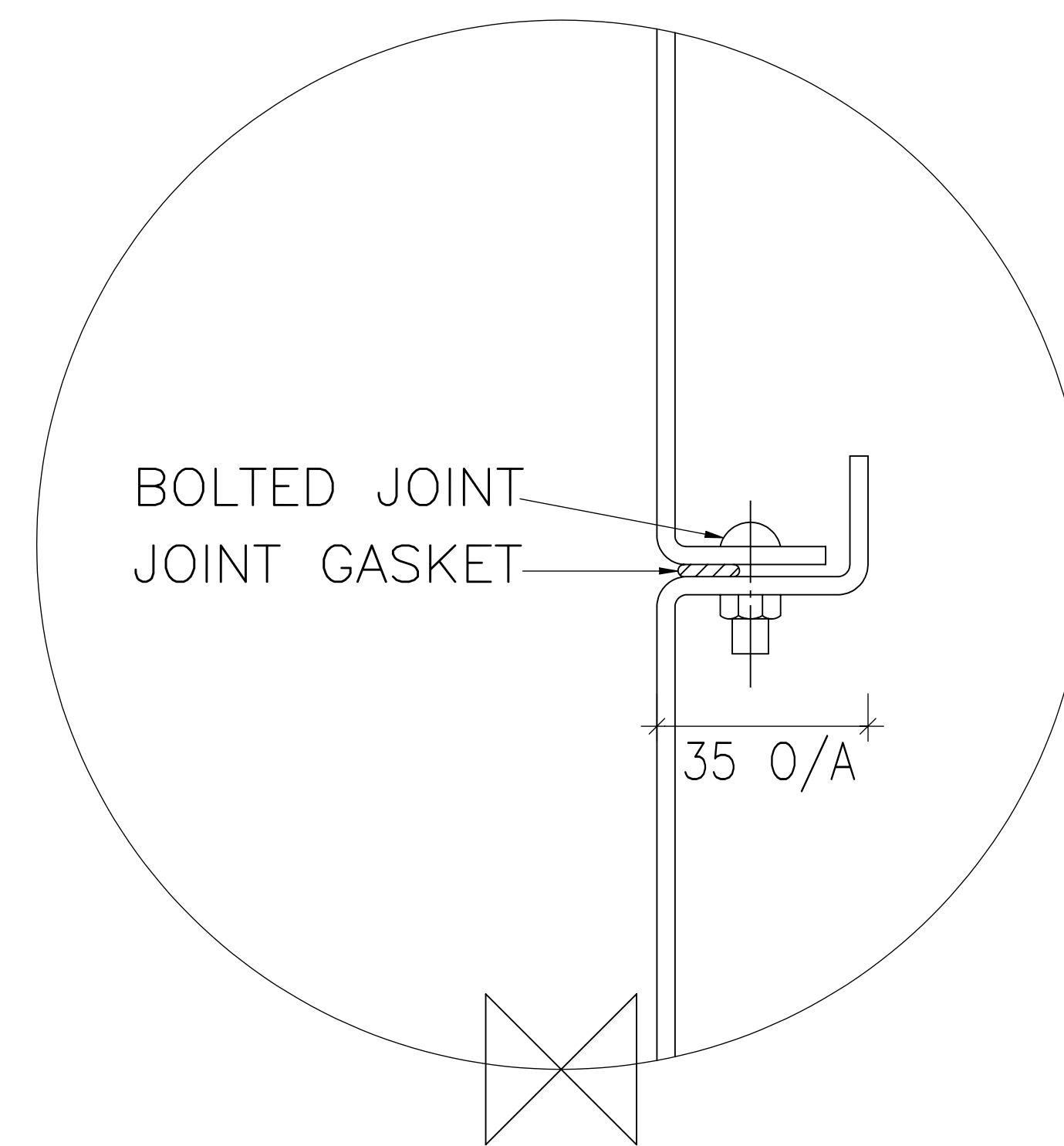
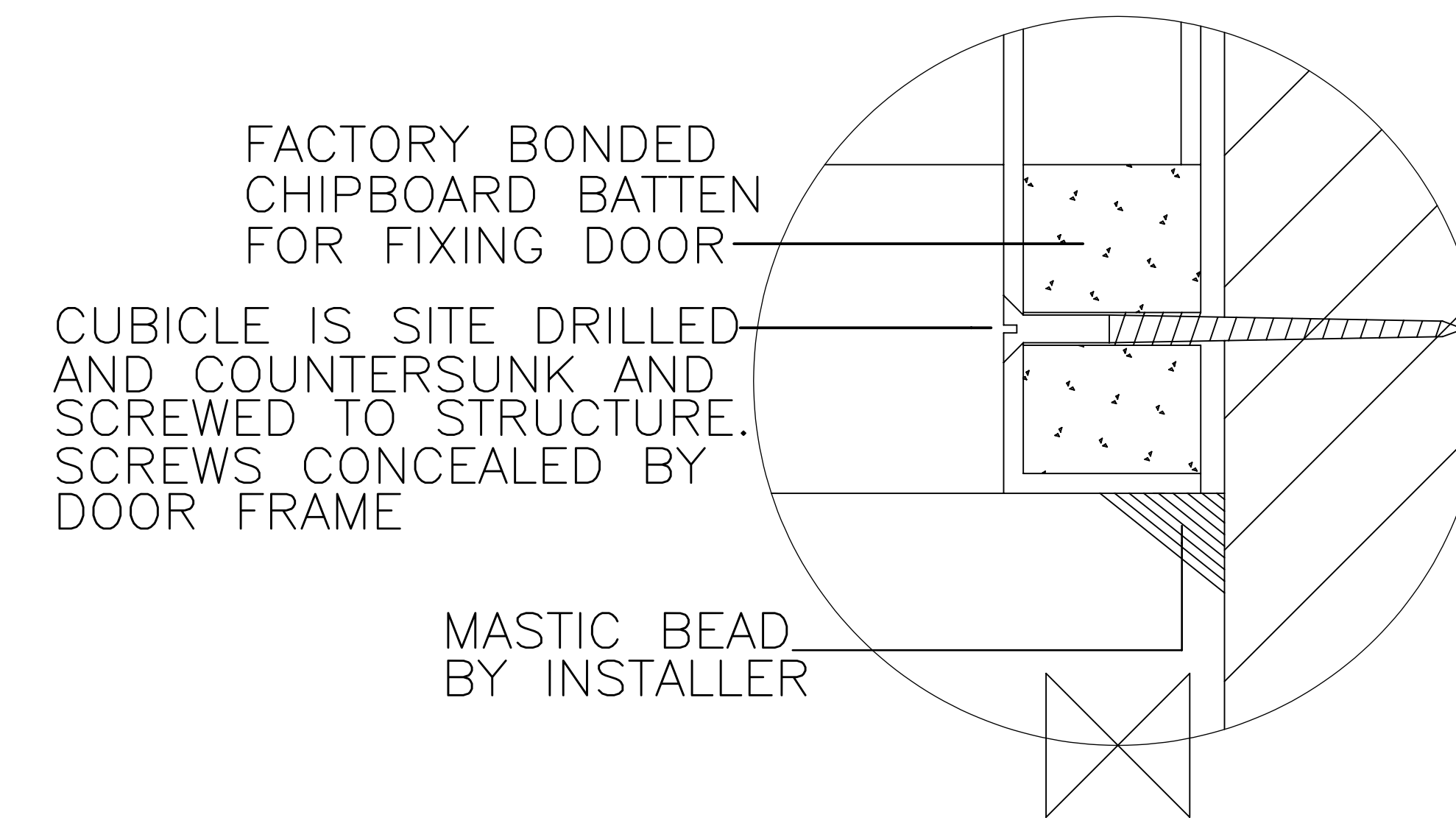


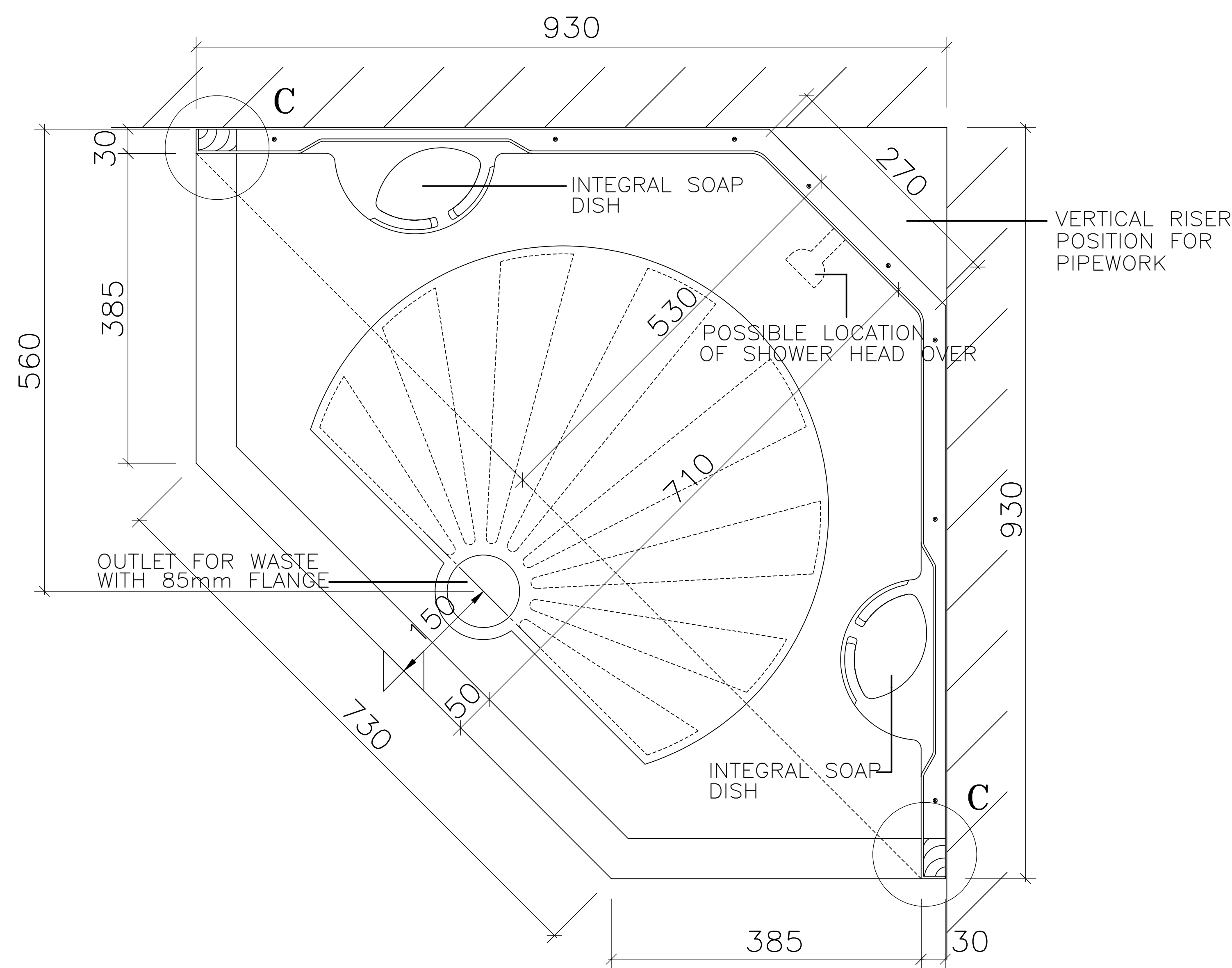
DETAIL A
SECTION THROUGH THRESHOLD & ACCESS PANEL



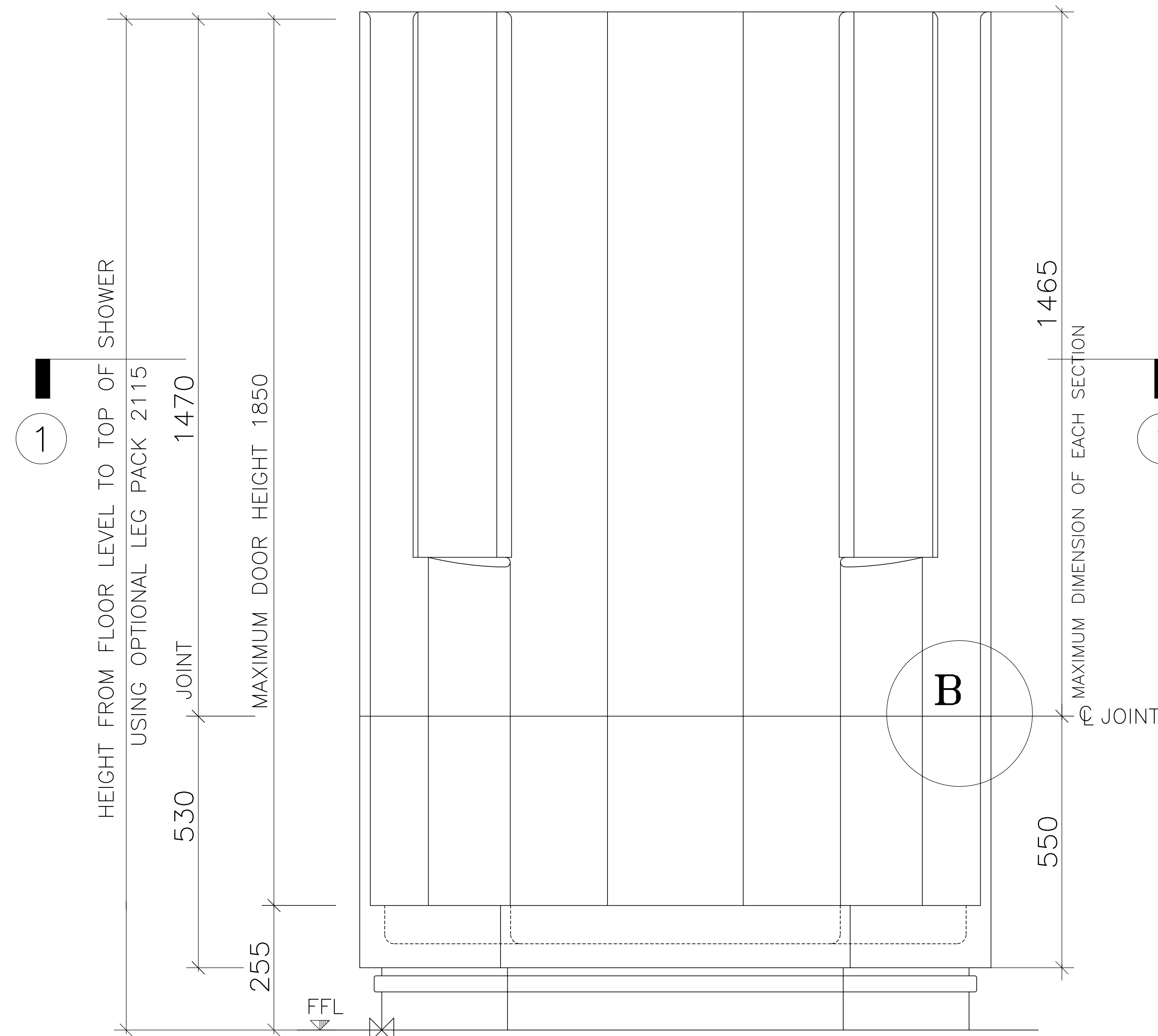
DETAIL B
VERTICAL SECTION THROUGH JOINT



DETAIL C
SECTION THROUGH DOOR FRAME



PLAN 1 - 1



FRONT ELEVATION

INTERNAL DIMENSIONS

Height 1935mm

OVERALL EXTERNAL DIMENSIONS

Width 930mm

Depth 930mm

Height[†]

with legs 2115mm

without legs 2000mm

Approximate Weight 48 Kg

[†]An additional 30mm is required for assembly

All dimensions shown are approximate and may vary slightly due to the manufacturing process

Allow normal building tolerances

Site conditions may vary, this drawing shows typical fixing details

Advanced Laminates Ltd T/A Advanced Showers has a programme of continuous development and research and reserves the right to change specifications and details without notice

900W



This drawing is copyright to Advanced Laminates Ltd T/A Advanced Showers and must not be copied for reproduced without prior permission.

Advanced Showers
Unit 2, Deedmore Road
Coventry, CV2 1EQ

Email: sales@advanced-showers.com
Website: www.advanced-showers.com
Telephone: 02476 101 303

MOULDED TWO PART PENTAGON CUBICLE WITH OPEN TOP SUITABLE FOR A CURTAIN RAIL OR SIDE SCREENS AND DOOR
TECHNICAL DRAWING

SCALE: NOT TO SCALE

