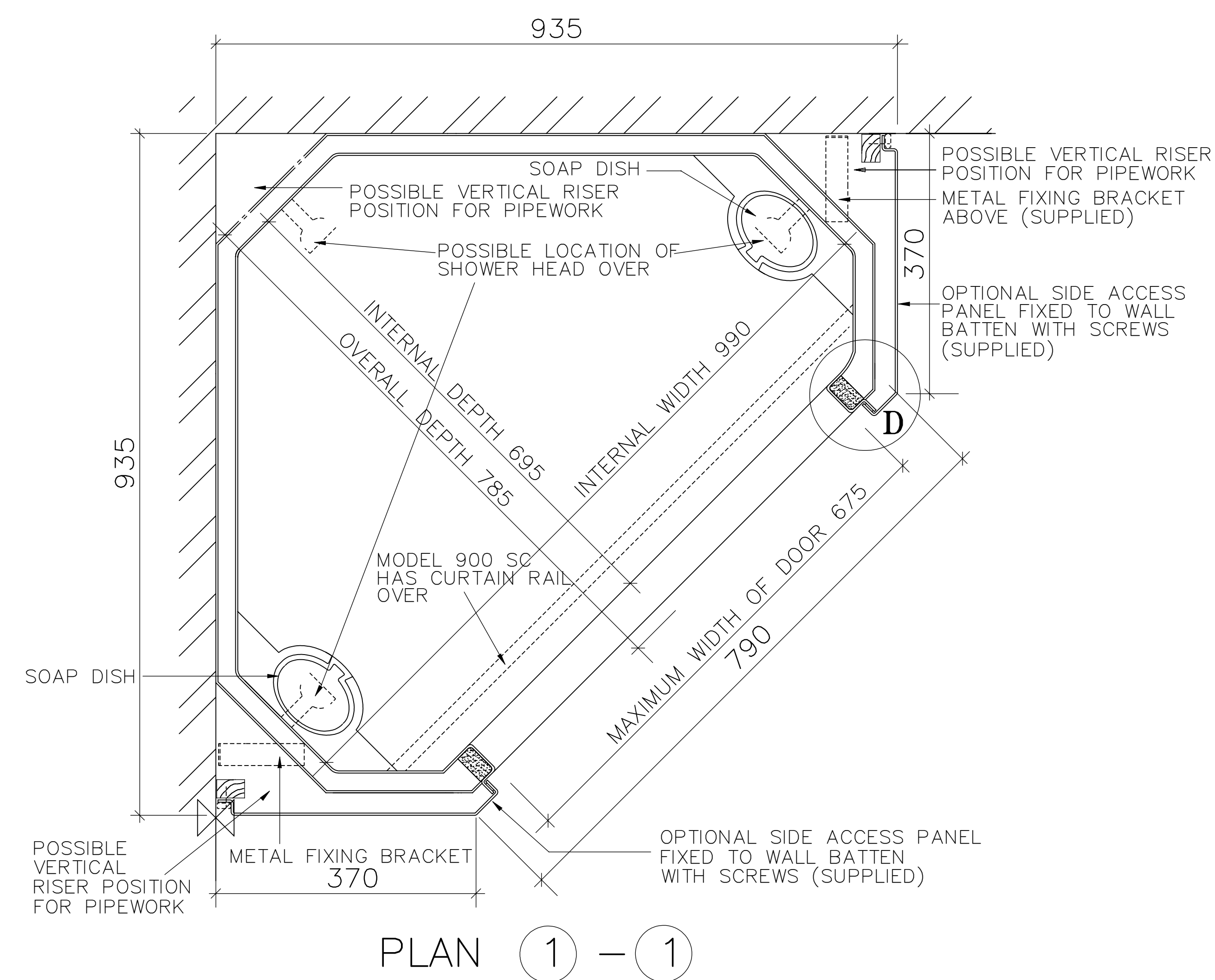
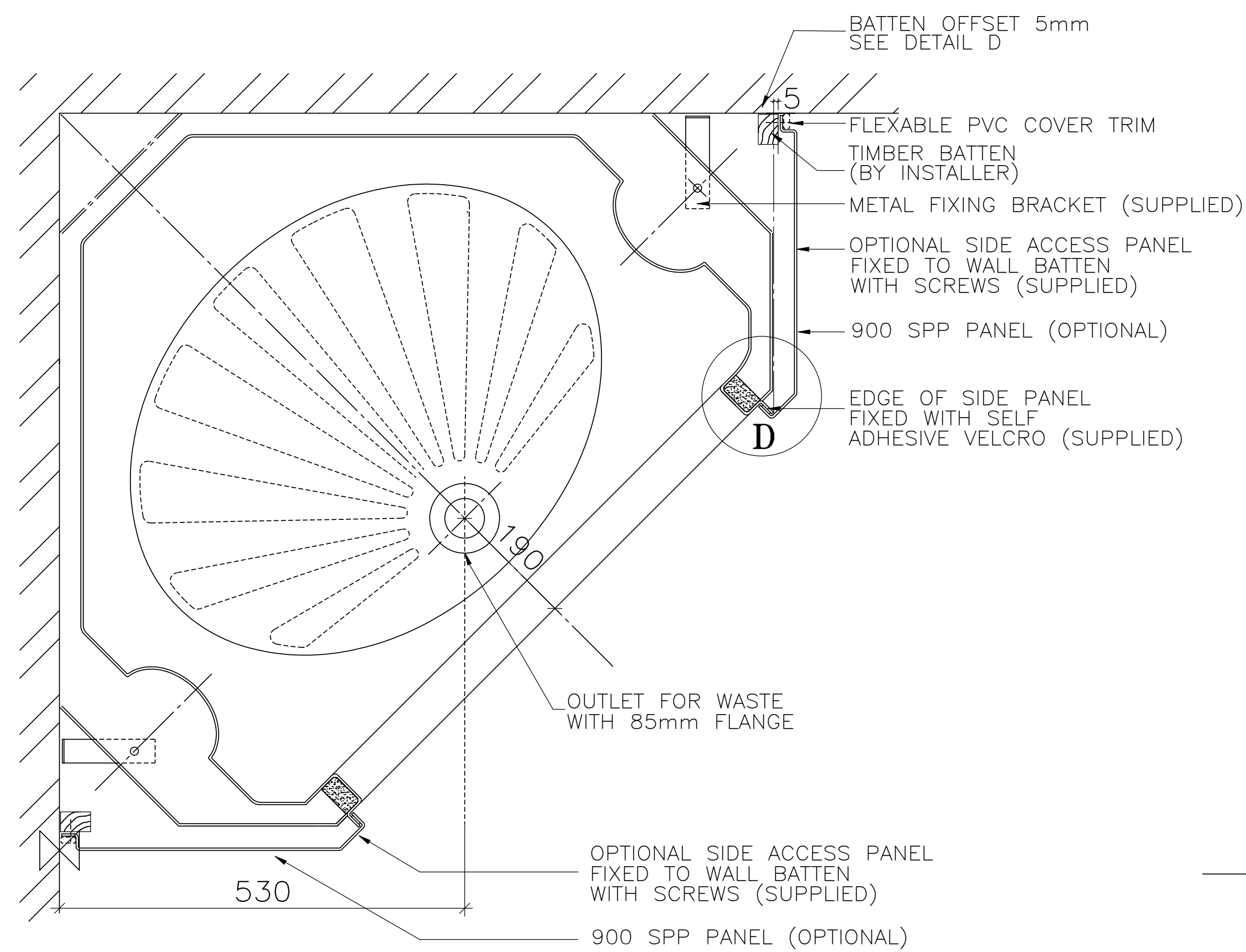


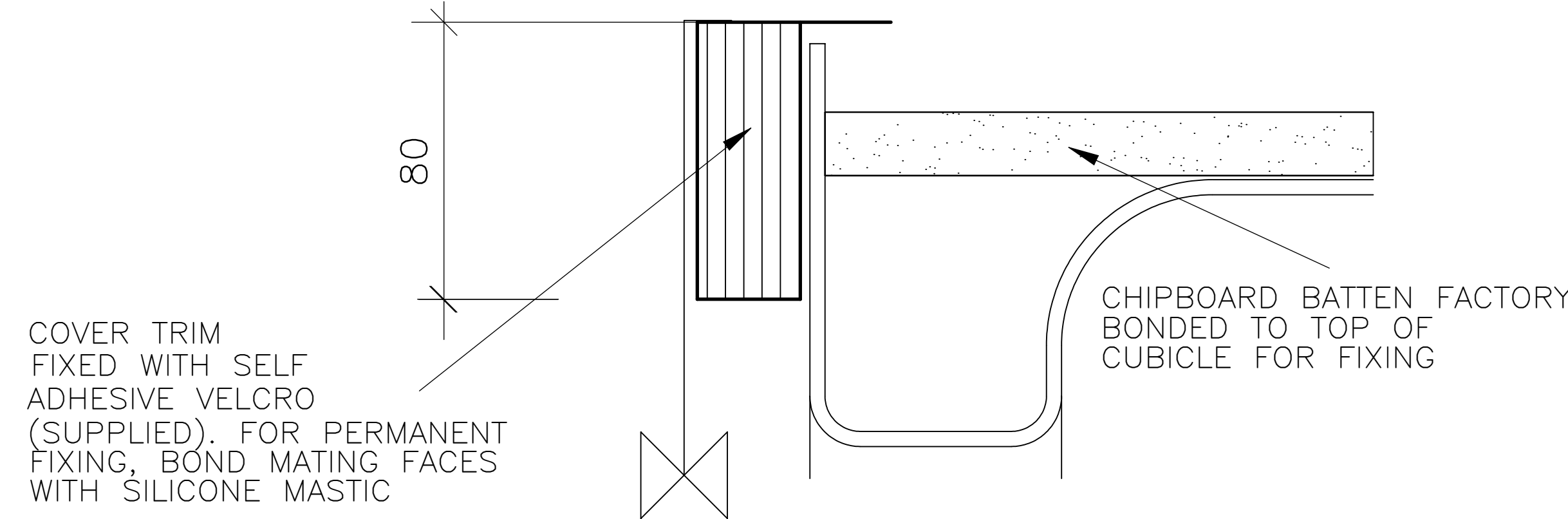
DETAIL A
SECTION THROUGH THRESHOLD & ACCESS PANEL



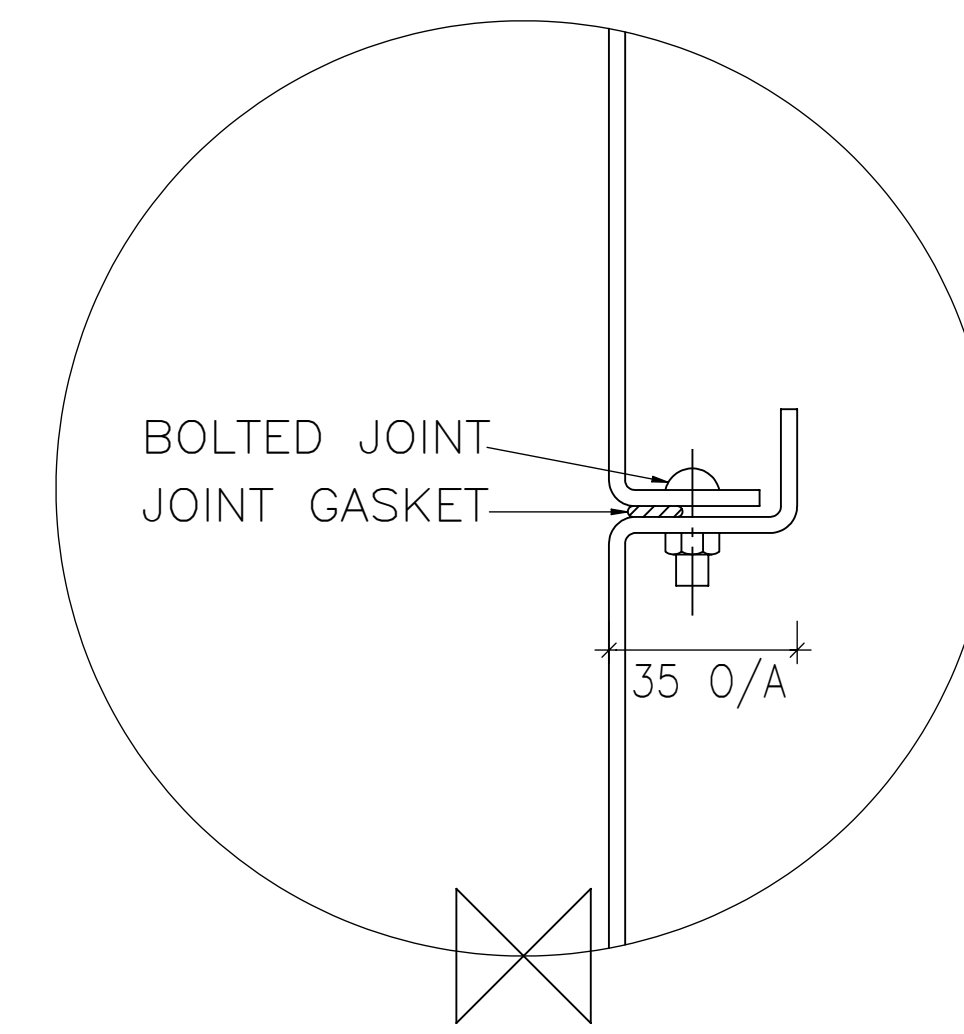
PLAN 1 - 1



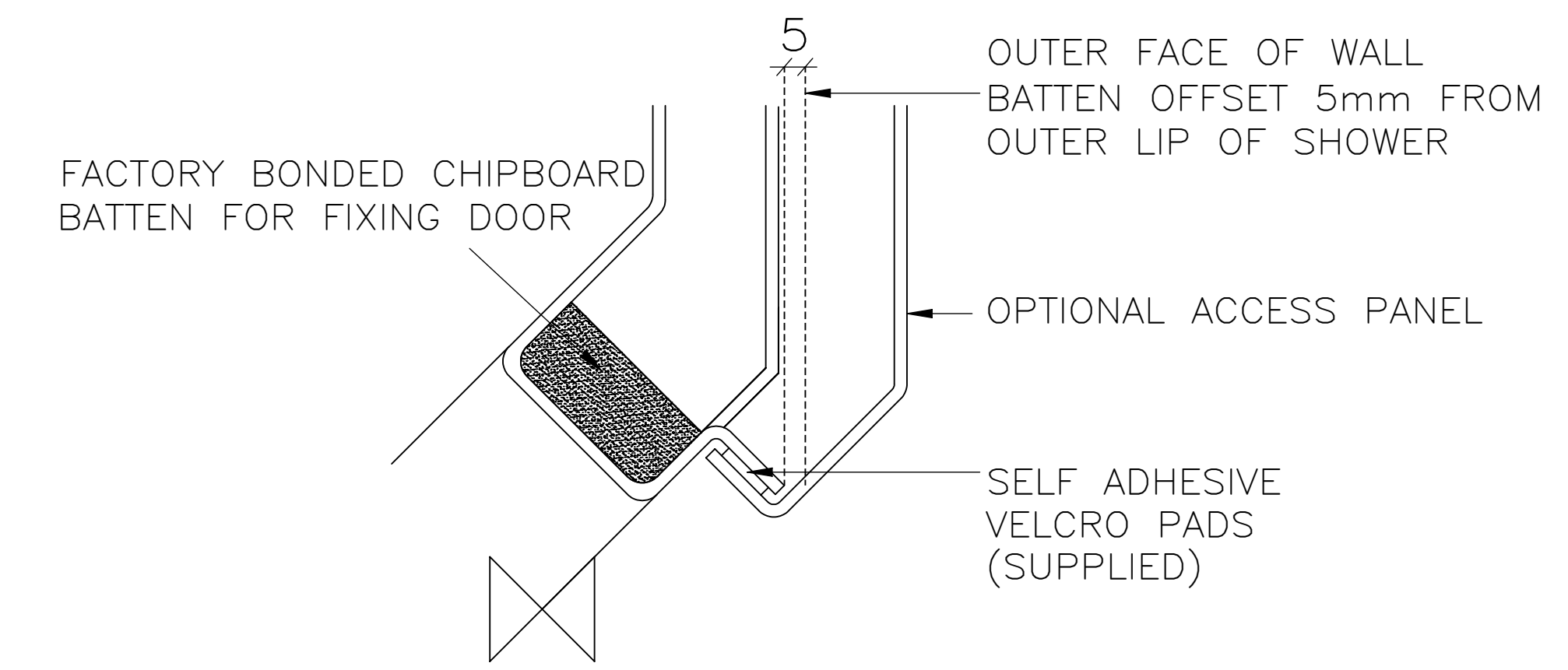
PLAN 2 - 2



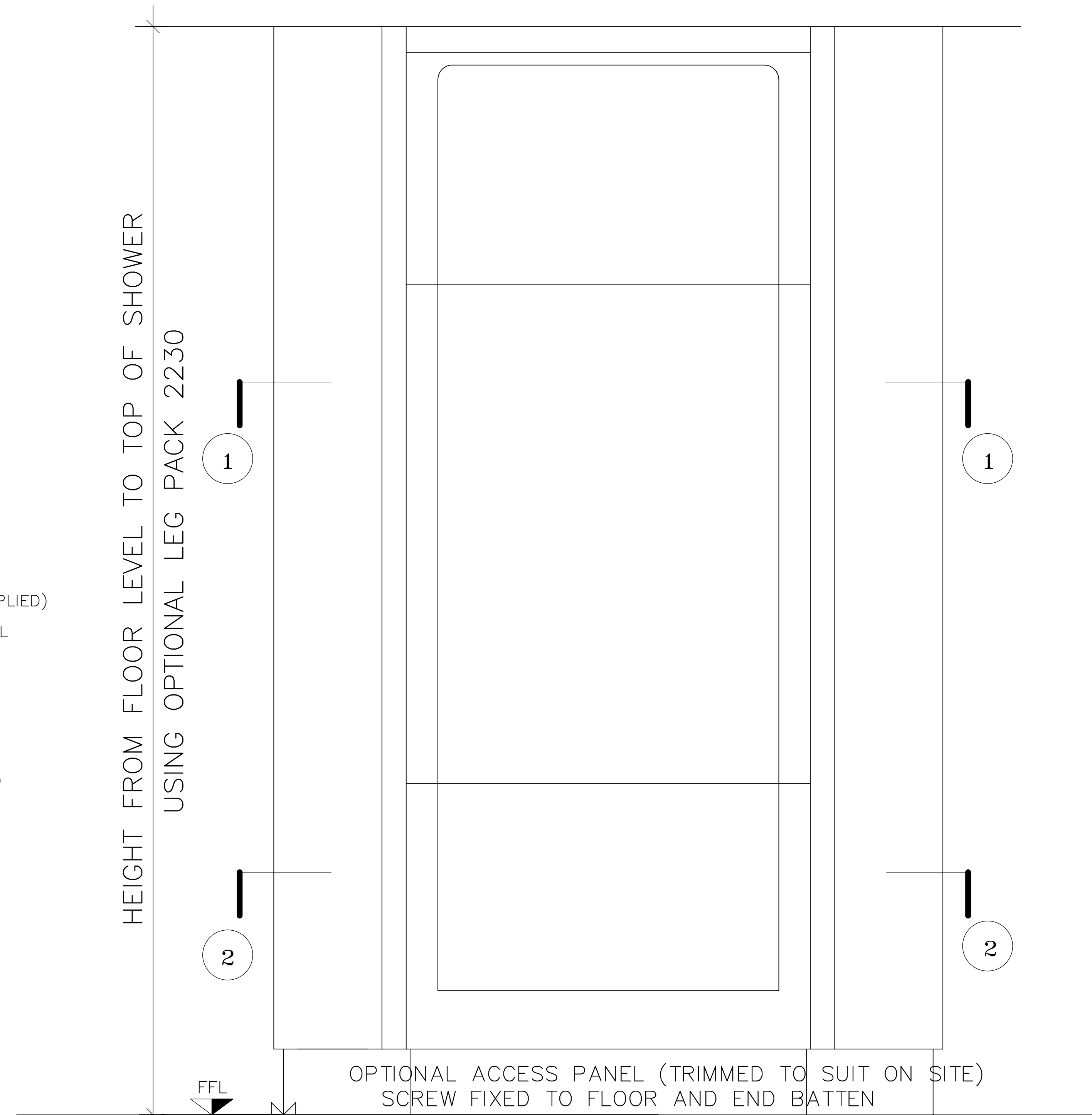
DETAIL B
SECTION THROUGH HEAD OF SHOWER CUBICLE



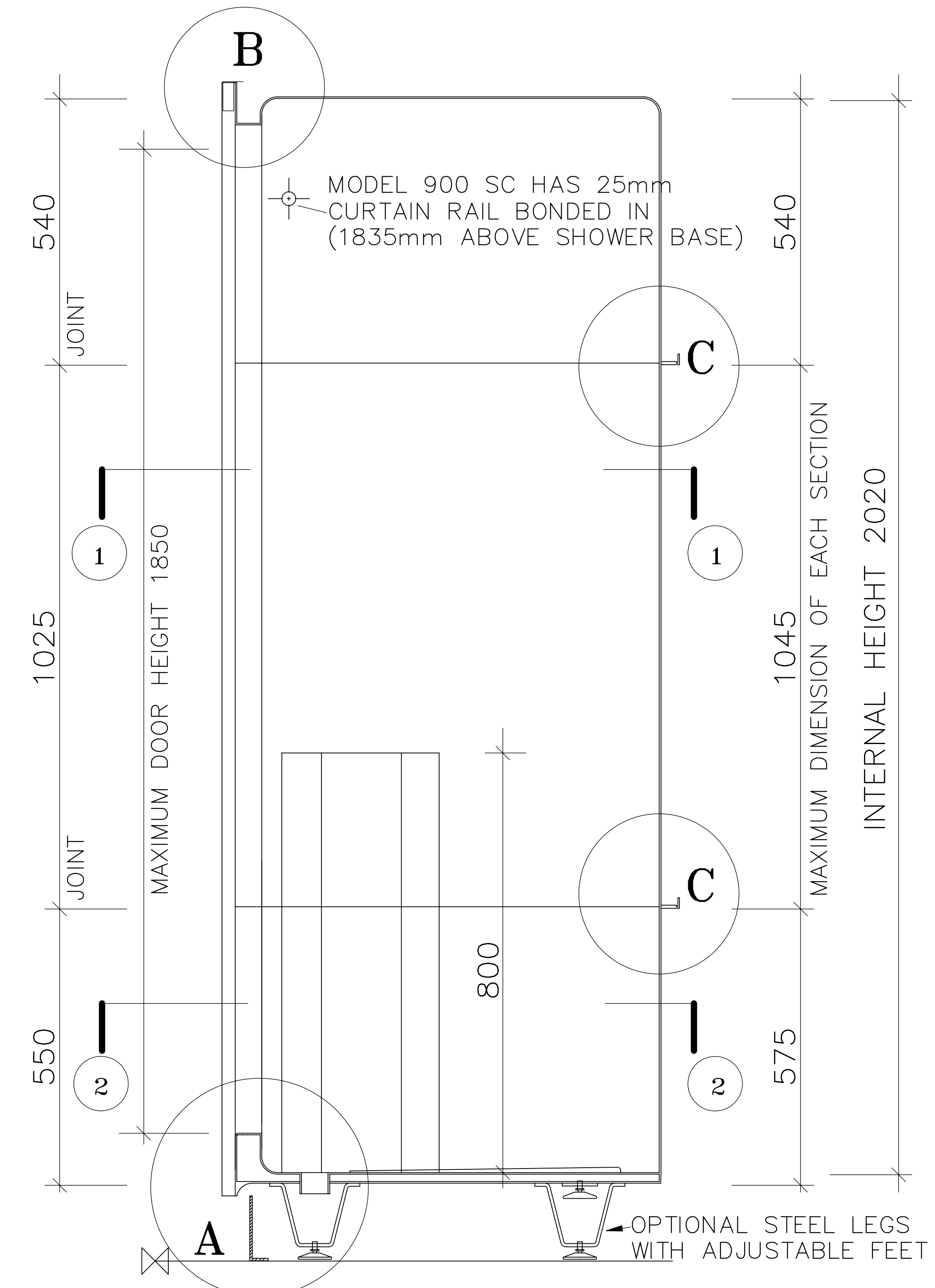
DETAIL C
VERTICAL SECTION THROUGH JOINT



DETAIL D
SECTION THROUGH DOOR FRAME AND SIDE PANEL



FRONT ELEVATION



SECTION XX

INTERNAL DIMENSIONS

Width 990mm
Depth 695mm
Height 2020mm

OVERALL EXTERNAL DIMENSIONS

Width 935mm
Depth 935mm

Height[†]
with legs 2230mm
without legs 2115mm

Approximate Weight 61 Kg

[†]An additional 30mm is required for assembly

All dimensions shown are approximate and may vary slightly due to the manufacturing process

Allow normal building tolerances

Site conditions may vary, this drawing shows typical fixing details

Advanced Laminates Ltd T/A Advanced Showers has a programme of continuous development and research and reserves the right to change specifications and details without notice

900SC/SD
(With optional side panel)

ADVANCED SHOWERS®

This drawing is copyright to Advanced Laminates Ltd T/A Advanced Showers and must not be copied for reproduction without prior permission.

Advanced Showers
Unit 2, Deedmore Road
Coventry, CV2 1EQ

Email:
sales@advanced-showers.com
Website:
www.advanced-showers.com
Telephone: 02476 101 303

MOULDED THREE PART PENTAGON CUBICLE (EITHER WITH FITTED CURTAIN RAIL - 900SC OR TO SUIT DOOR - 900SD)

TECHNICAL DRAWING

SCALE:
NOT TO SCALE