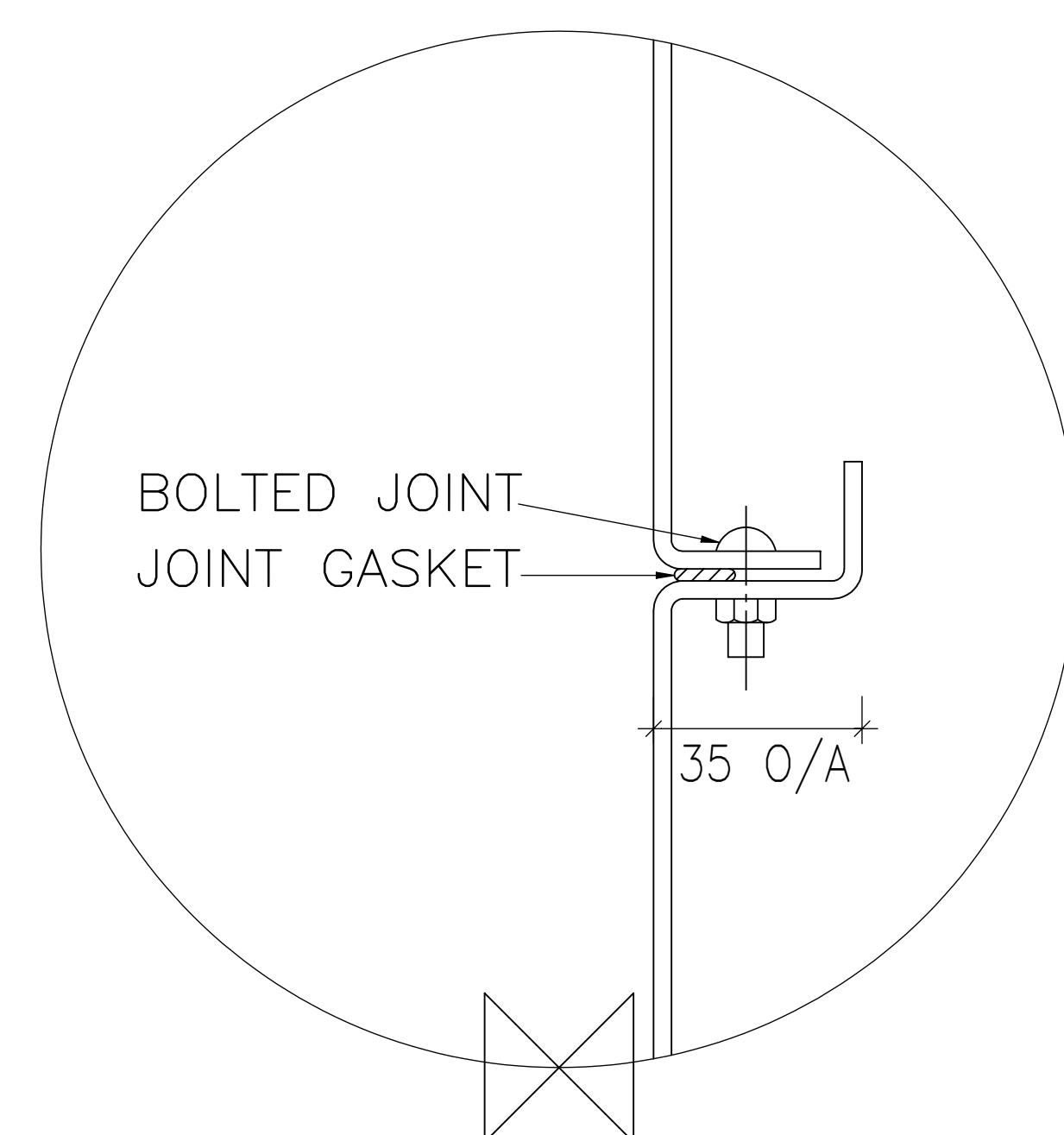
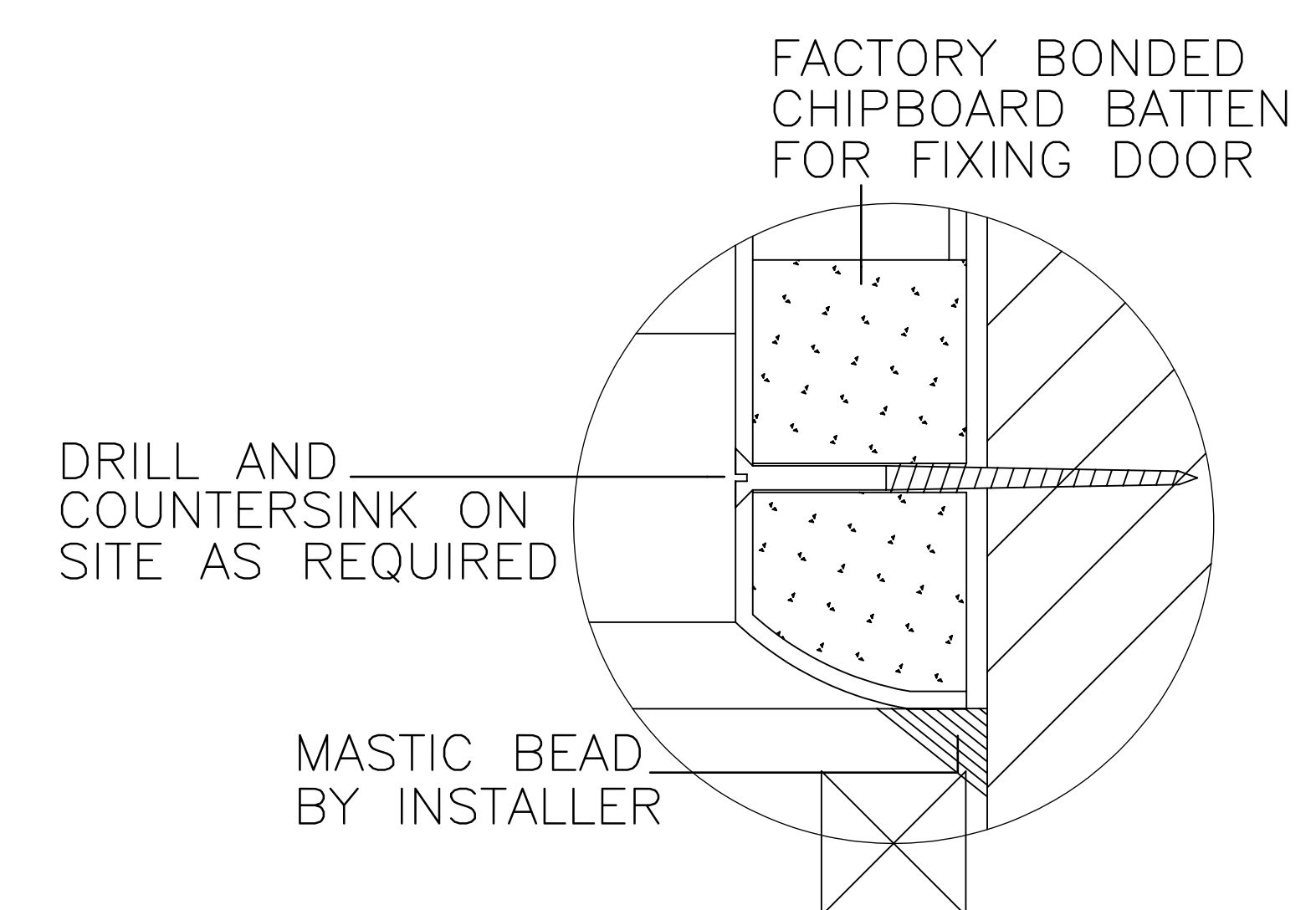


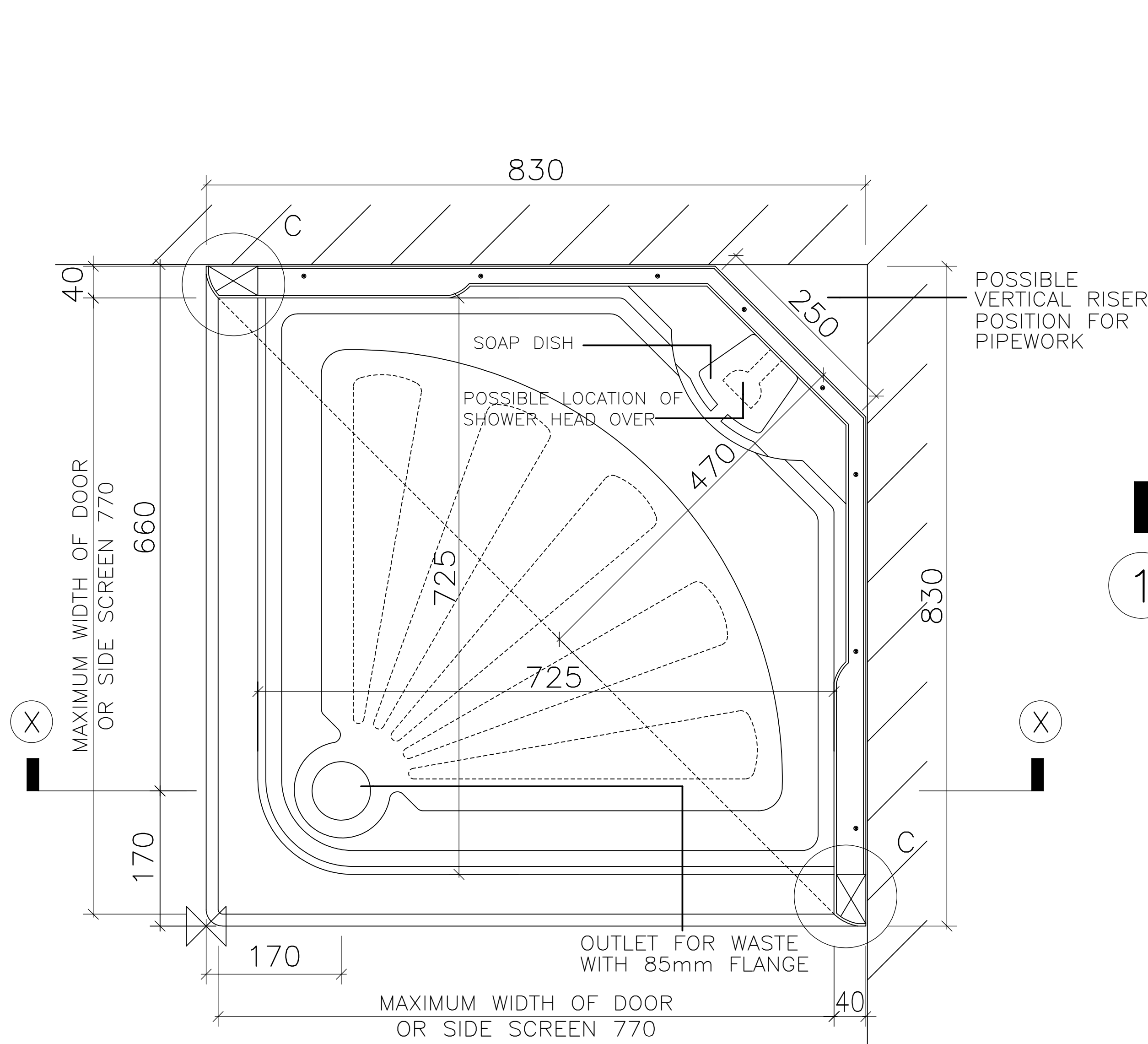
DETAIL A
SECTION THROUGH THRESHOLD & ACCESS PANEL



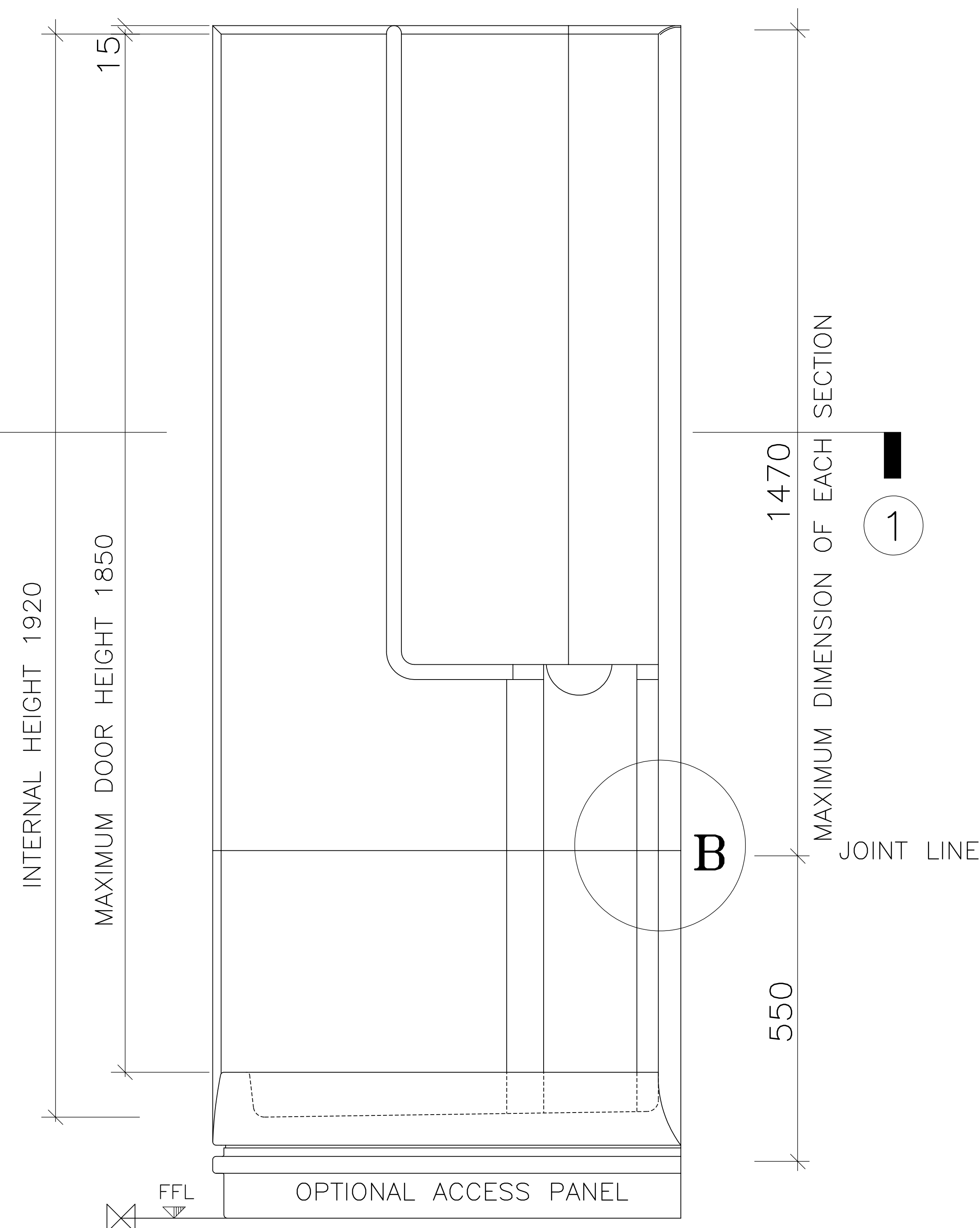
DETAIL B
VERTICAL SECTION THROUGH JOINT



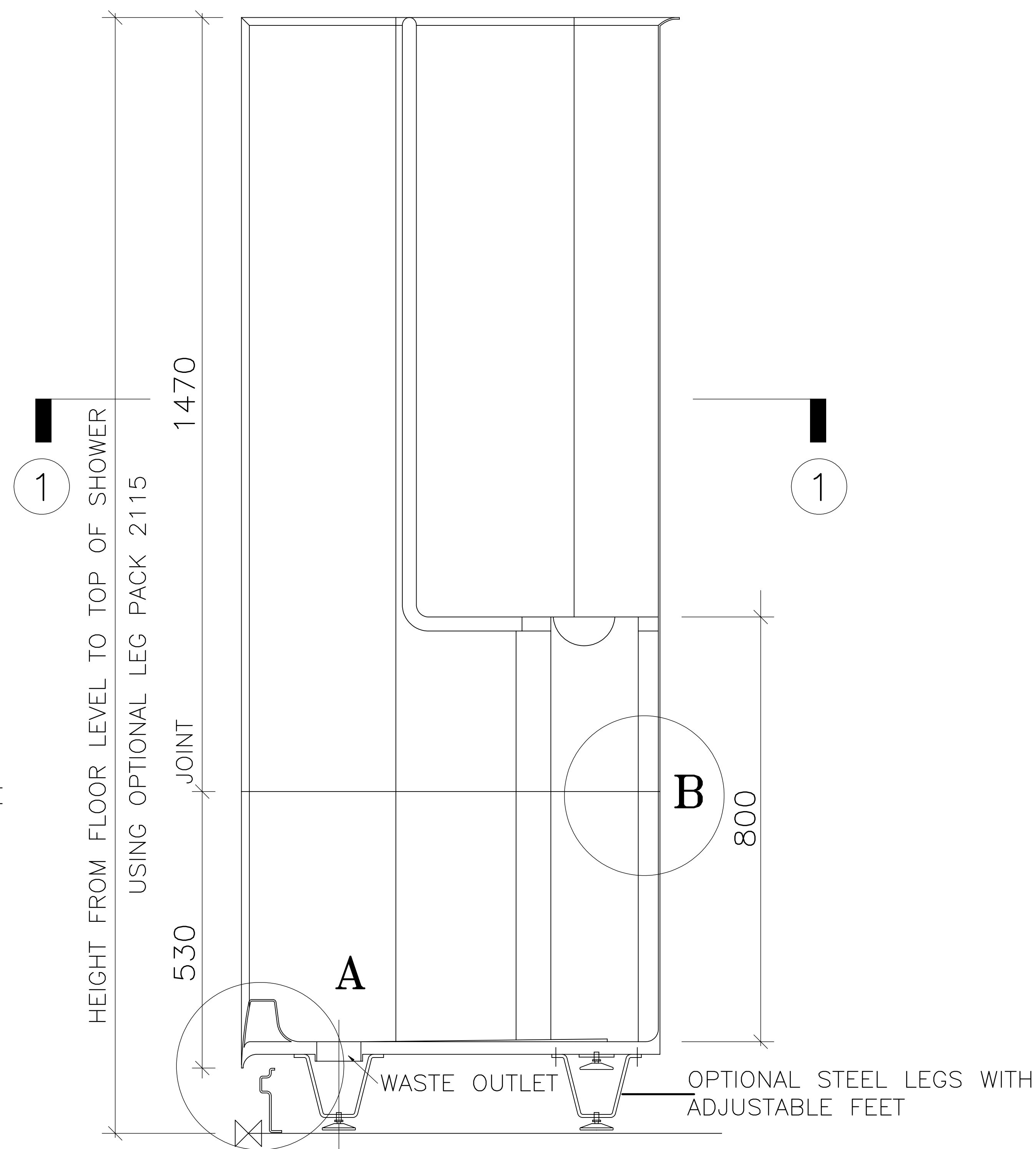
DETAIL C
SECTION THROUGH DOOR FRAME



PLAN 1-1



ELEVATION



SECTION XX

INTERNAL DIMENSIONS

Width 725mm
Depth 725mm
Height 1920mm

OVERALL EXTERNAL DIMENSIONS

Width 830mm
Depth 830mm
Height[†]
with legs 2115mm /
without legs 2000mm /

Approximate Weight 45 Kg

[†]An additional 30mm is required for assembly

All dimensions shown are approximate and may vary slightly due to the manufacturing process

Allow normal building tolerances

Site conditions may vary, this drawing shows typical fixing details

Advanced Laminates Ltd T/A Advanced Showers has a programme of continuous development and research and reserves the right to change specifications and details without notice

800W



This drawing is copyright to Advanced Laminates Ltd T/A Advanced Showers and must not be copied for reproduced without prior permission.

Advanced Showers
Unit 2, Deedmore Road
Coventry, CV2 1EQ

Email:
sales@advanced-showers.com
Website:
www.advanced-showers.com
Telephone: 02476 101 303

MOULDED TWO PART CORNER CUBICLE WITH OPEN TOP SUITABLE FOR A CURTAIN RAIL OR SIDE SCREEN AND DOOR

TECHNICAL DRAWING

SCALE:

NOT TO SCALE