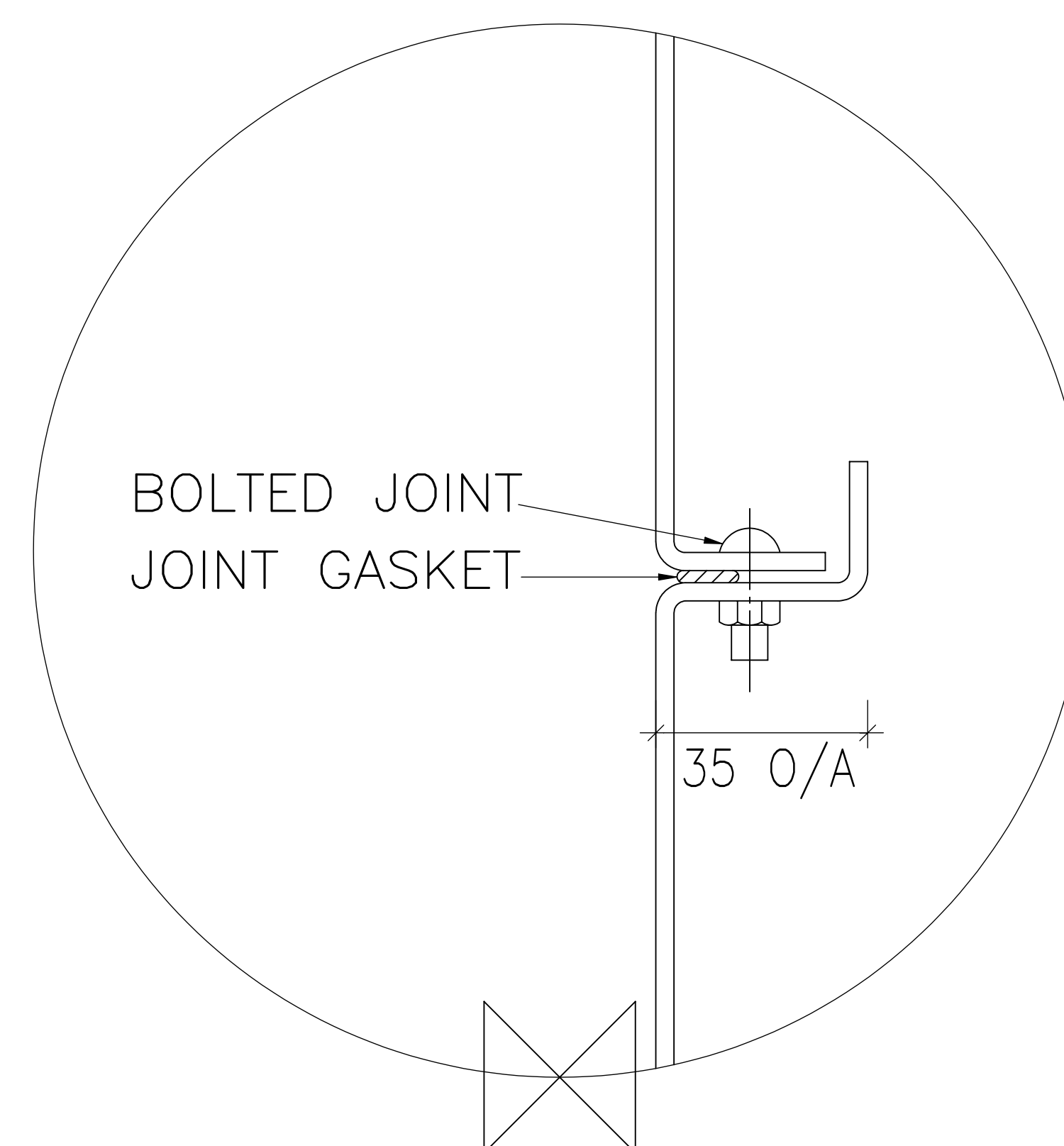
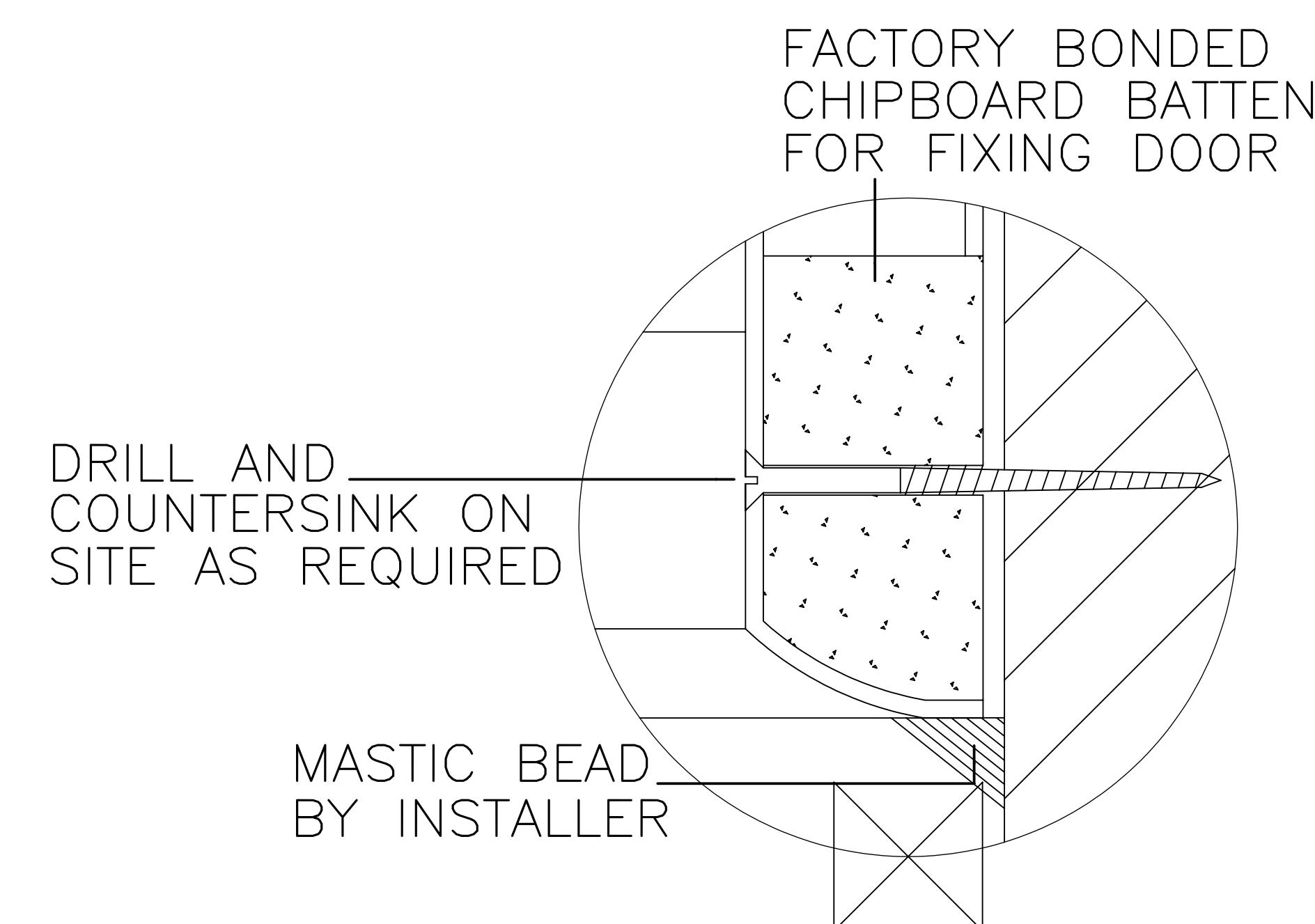


DETAIL A  
SECTION THROUGH THRESHOLD & ACCESS PANEL



DETAIL B  
VERTICAL SECTION THROUGH JOINT



DETAIL C  
SECTION THROUGH DOOR FRAME

#### INTERNAL DIMENSIONS

Width 725mm  
Depth 725mm  
Height 2070mm /

#### OVERALL EXTERNAL DIMENSIONS

Width 830mm  
Depth 830mm  
Height †  
with legs 2265mm /  
without legs 2150mm /

Approximate Weight 48 Kg

†An additional 30mm is required for assembly

All dimensions shown are approximate and may vary slightly due to the manufacturing process

Allow normal building tolerances

Site conditions may vary, this drawing shows typical fixing details

Advanced Laminates Ltd T/A Advanced Showers has a programme of continuous development and research and reserves the right to change specifications and details without notice

# 800W Plus



This drawing is copyright to Advanced Laminates Ltd T/A Advanced Showers and must not be copied for reproduction without prior permission.

Advanced Showers  
Unit 2, Deedmore Road  
Coventry, CV2 1EQ

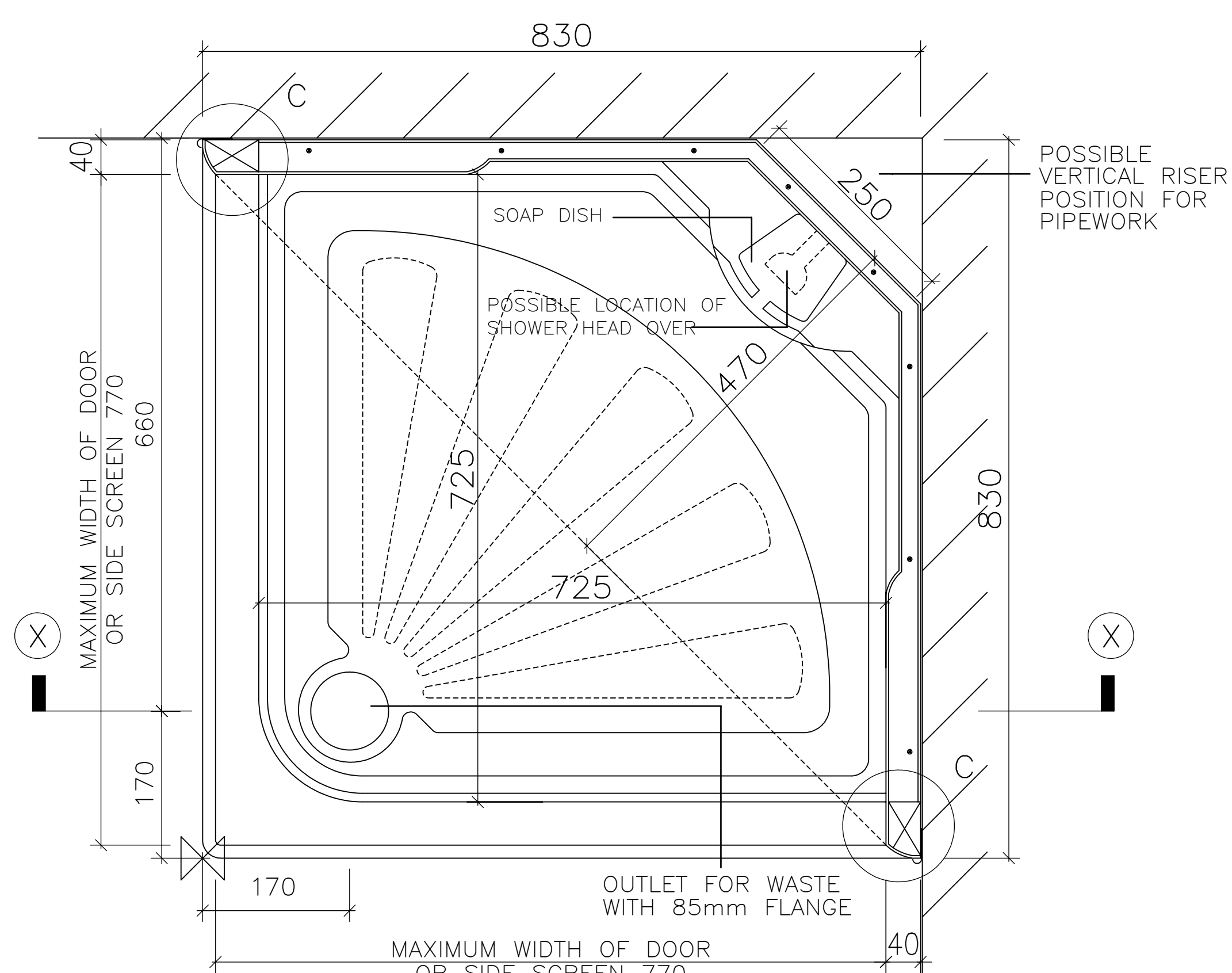
Email: sales@advanced-showers.com  
Website: www.advanced-showers.com  
Telephone: 02476 101 303

MOULDED TWO PART CORNER CUBICLE WITH OPEN TOP SUITABLE FOR A CURTAIN RAIL OR SIDE SCREEN AND DOOR

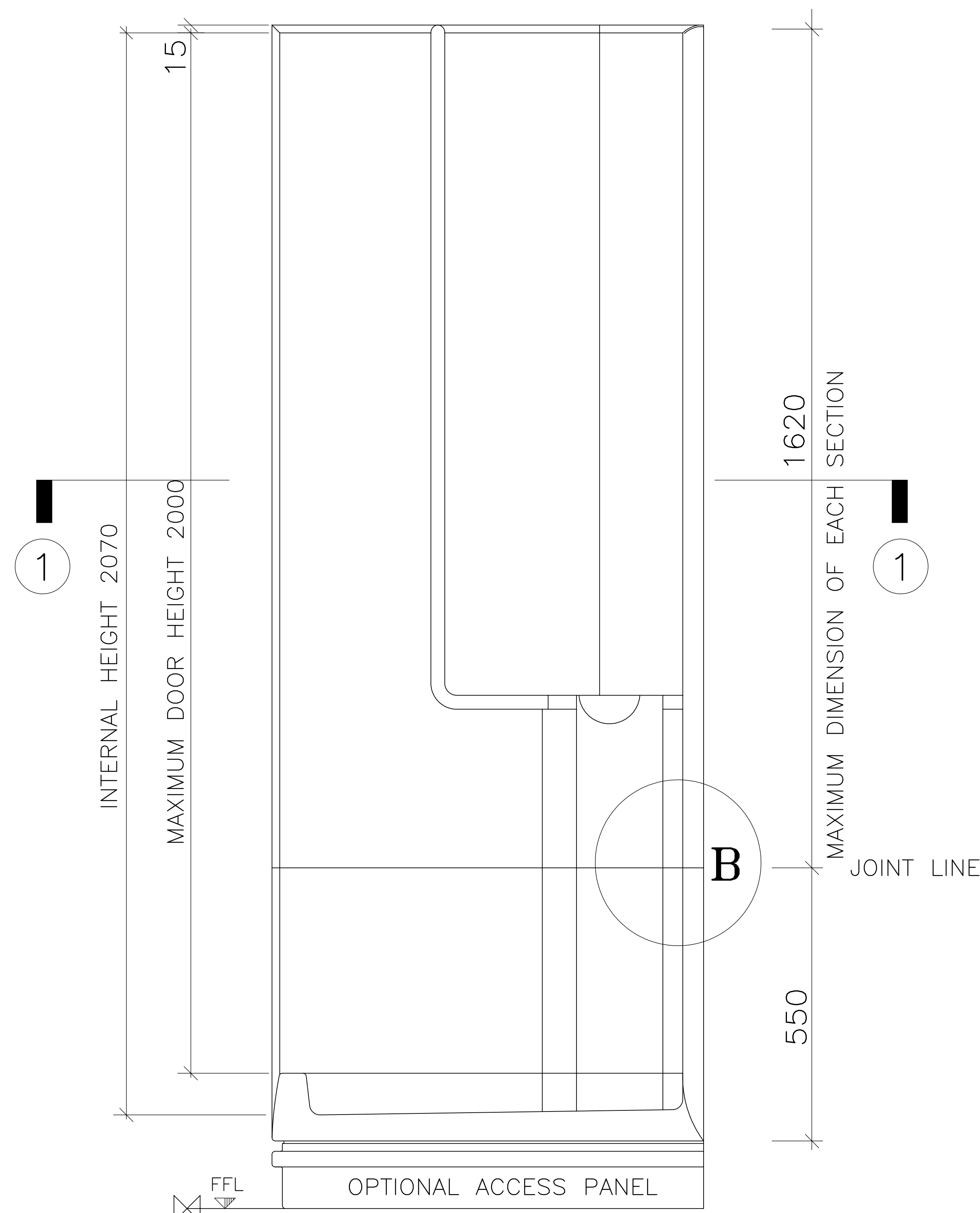
TECHNICAL DRAWING

SCALE:

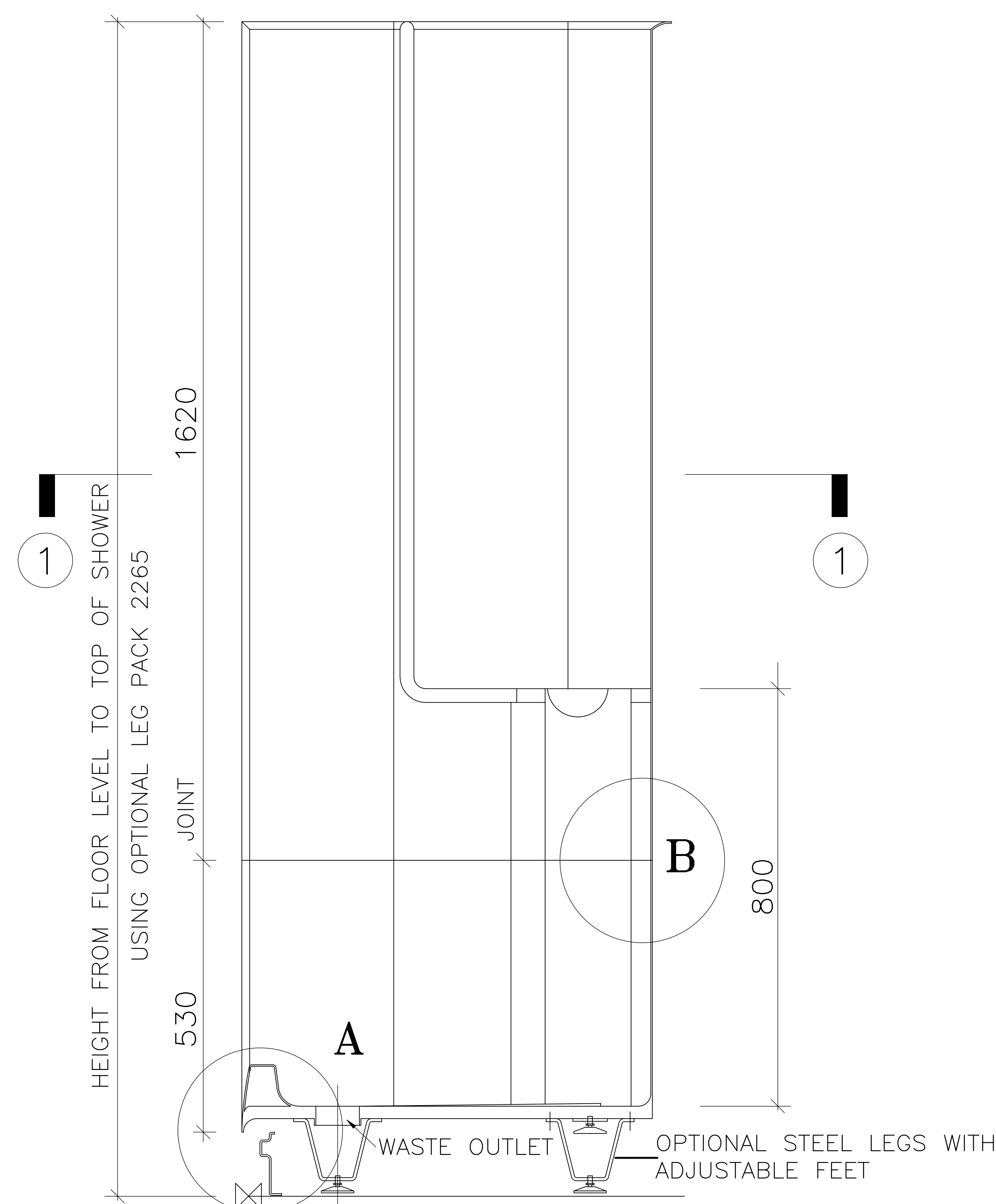
NOT TO SCALE



PLAN 1 - 1



ELEVATION



SECTION XX