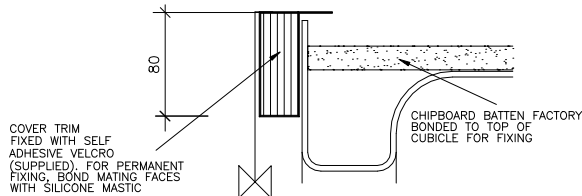
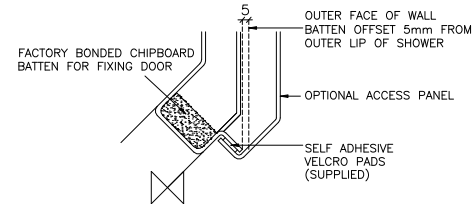


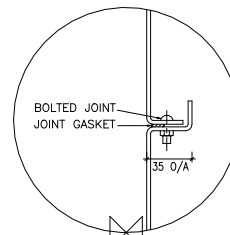
DETAIL A
SECTION THROUGH THRESHOLD & ACCESS PANEL



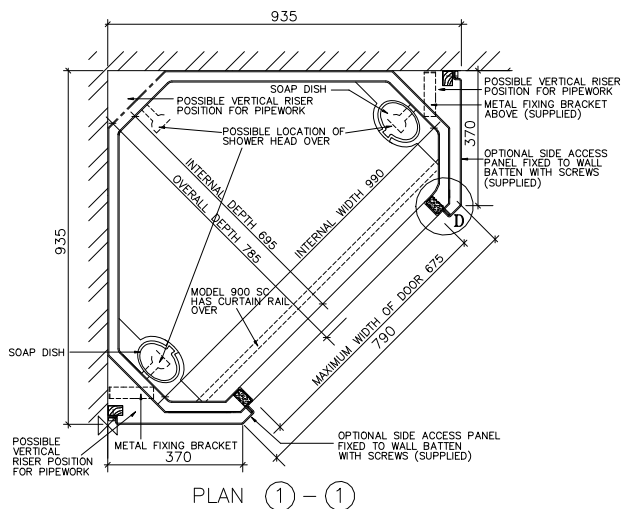
DETAIL B
SECTION THROUGH HEAD OF SHOWER CUBICLE



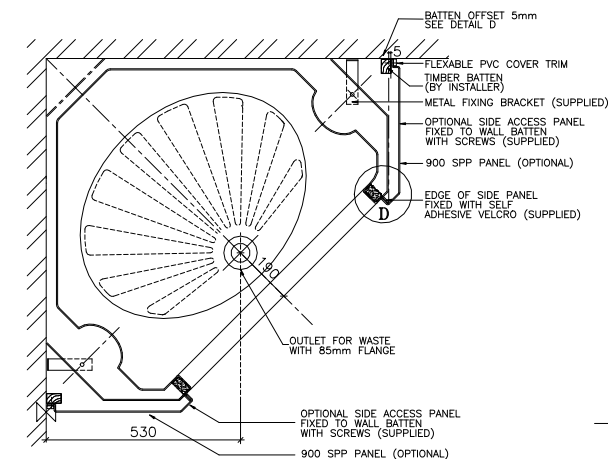
DETAIL D
SECTION THROUGH DOOR FRAME AND SIDE PANEL



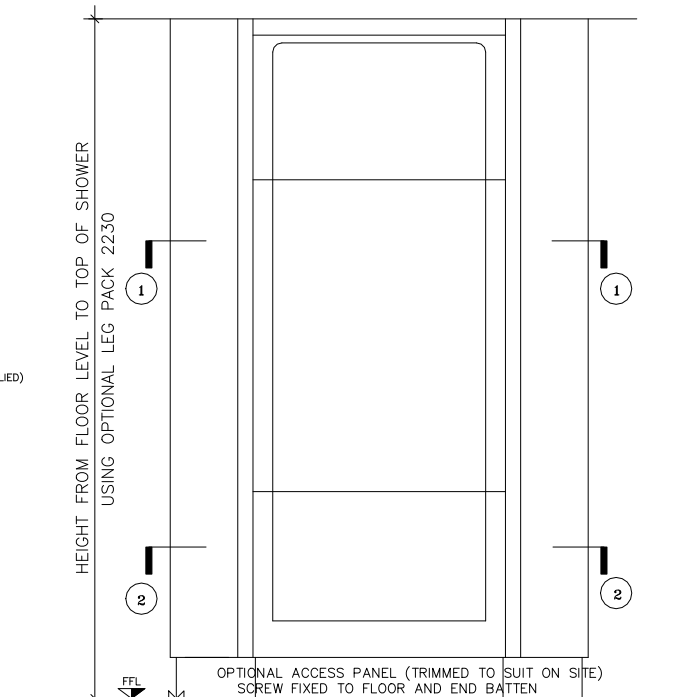
DETAIL C
VERTICAL SECTION THROUGH JOINT



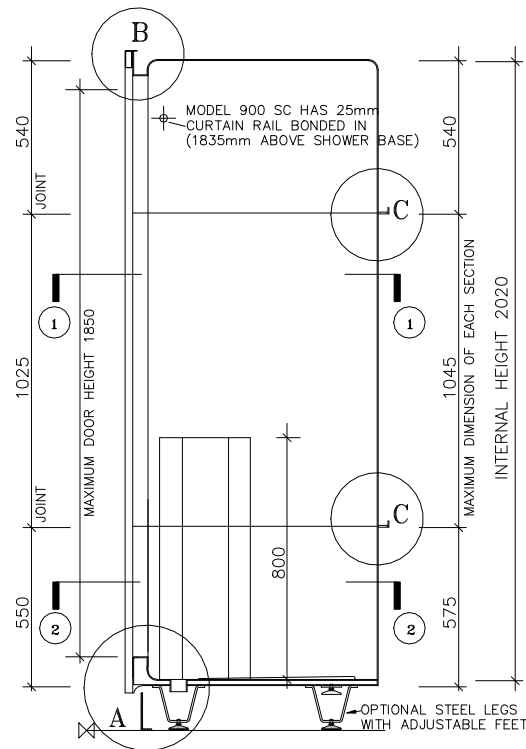
PLAN 1 - 1



PLAN 2 - 2



FRONT ELEVATION



SECTION XX

INTERNAL DIMENSIONS

Width 990mm (3'3")
Depth 695mm (2'3½")
Height 2020mm (6'7½")

OVERALL EXTERNAL DIMENSIONS

Width 935mm (3'1")
Depth 935mm (3'1")

Height †
with legs 2230mm (7'3¾")
without legs 2115mm (6'11¼")

Approximate Weight 61 Kg

†An additional 30mm is required for assembly

All dimensions shown are approximate and may vary slightly due to the manufacturing process

Allow normal building tolerances

Site conditions may vary. This drawing shows typical fixing details.

Advanced Showers has a programme of continuous development and research and reserves the right to change specifications and details without notice

900SC/SD
(With optional side panel)

ADVANCED SHOWERS

U.K. patent No. 2281033
European Patent No. 0639345
This drawing is copyright to Advanced Showers International Ltd. And must not be copied or reproduced without prior permission.

ADVANCED SHOWERS INTERNATIONAL LTD
UNIT 2 ALPHA BUSINESS PARK
DEEDMORE ROAD
COVENTRY CV2 1EQ

Email: sales@advanced-showers.com
Web Site: www.advanced-showers.com
Telephone: 01483 532020
Facsimile: 01483 532080

MOULDED THREE PART PENTAGON CUBICLE (EITHER WITH FITTED CURTAIN RAIL - 900SC OR TO SUIT DOOR - 900SD)

TECHNICAL DRAWING

SCALE: NOT TO SCALE