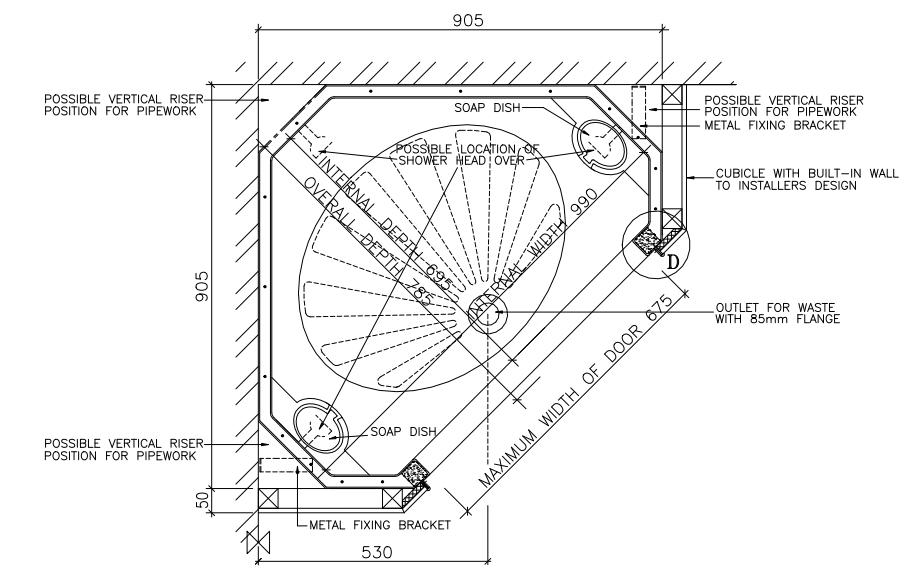
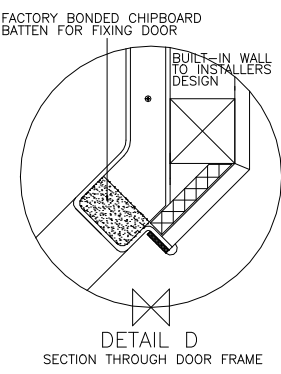
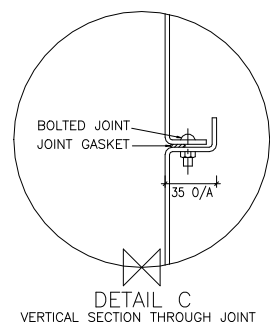
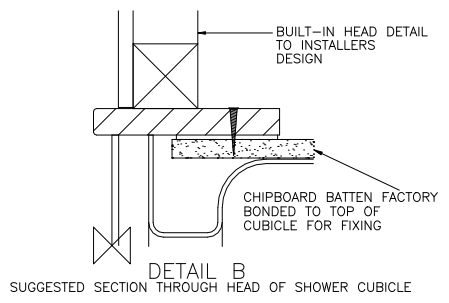
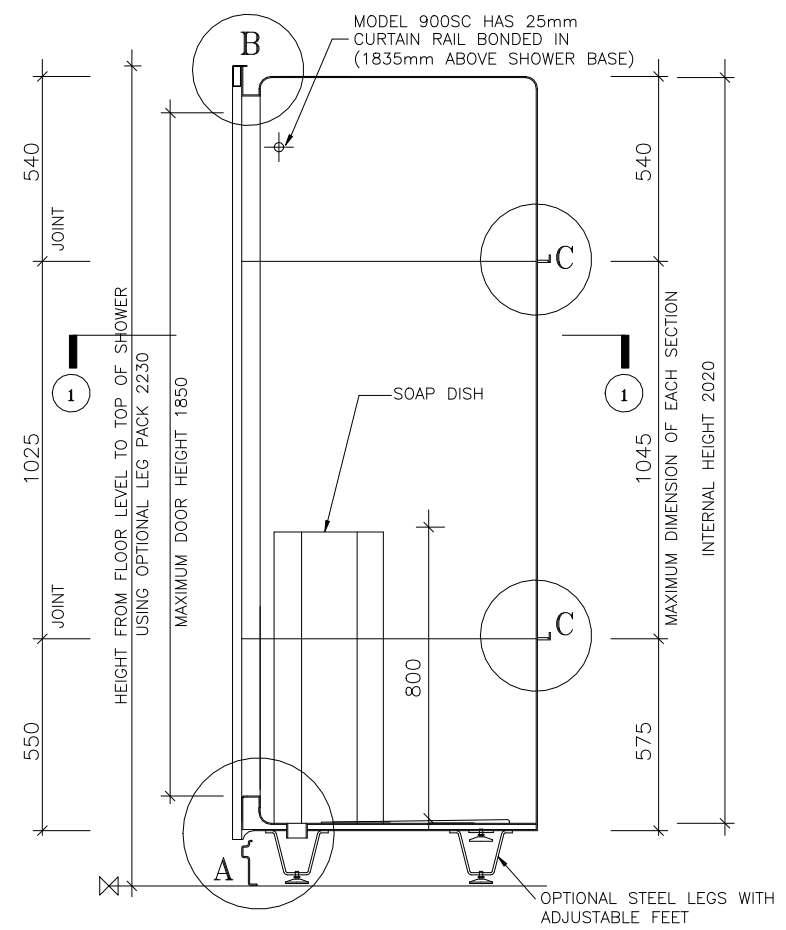


DETAIL A
SECTION THROUGH THRESHOLD & ACCESS PANEL



PLAN 1 - 1



SECTION XX

INTERNAL DIMENSIONS
 Width 990mm (3'3")
 Depth 695mm (2'3½")
 Height 2020mm (6'7½")

OVERALL EXTERNAL DIMENSIONS
 Width 905mm (2'11½")
 Depth 905mm (2'11½")

Width & Depth with stud wall 955mm (3'1½")

Height †
 with legs 2230mm (7'3¾")
 without legs 2115mm (6'11¼")

Approximate Weight 51 Kg

†An additional 30mm is required for assembly

All dimensions shown are approximate and may vary slightly due to the manufacturing process

Allow normal building tolerances

Site conditions may vary. This drawing shows typical fixing details.

Advanced Showers has a programme of continuous development and research and reserves the right to change specifications and details without notice

900SC/SD
(Built-in)



U.K. patent No. 2281033
 European Patent No. 0639345
 This drawing is copyright to Advanced Showers International Ltd. And must not be copied or reproduced without prior permission.

ADVANCED SHOWERS INTERNATIONAL LTD
 UNIT 2 ALPHA BUSINESS PARK
 DEEDMORE ROAD
 COVENTRY CV2 1EQ

Email: sales@advanced-showers.com
 Web Site: www.advanced-showers.com
 Telephone: 01483 532020
 Facsimile: 01483 532080

MOULDED THREE PART PENTAGON CUBICLE (EITHER WITH FITTED CURTAIN RAIL - 900SC OR TO SUIT DOOR - 900SD)

TECHNICAL DRAWING

SCALE: NOT TO SCALE